



PRAGMATIC EMBD SOLUTIONS

Inspiring World, Empowering Mind

COMPANY PROFILE





PRAGMATIC EMBD SOLUTIONS

I nspiring World, Empowering Mind

Business Address: Pragmatic Embd Solutions,
#531, 63rd Cross, 12th Main,
5th Block Rajajinagar,
Bangalore – 560010.
Landmark: Near Bashyam circle.

Telephone: 080 – 42120773

Mobile: +91-9845843843

Email: shashi@pragmaticembed.com,
shashiblore@gmail.com.

Website: www.pragmaticembed.com

GST IN No: 29BCFPK9562D1ZC

Service Tax No: BCFPK9562DST001

Annual Turnover: 40 Lakhs.

Total Employees: Eight.

Primary Line of Business: Embedded Systems - Design and Development.

Contact Person: K Shashi Kiran.

Management Directory

- K. SHASHI KIRAN (Technical Lead & Proprietor) (9845843843)
- Sandhya G S (Engineering Manager) (9886654490)



PRAGMATIC EMBD SOLUTIONS

Inspiring World, Empowering Mind

Company History

Incorporated in the year 2009 and located in the heart of Silicon City, we “**Pragmatic Embd Solutions**” were established with a goal to provide end to end solutions and services in the field of Embedded System Design and Development. We provide design and support of specialized products in Embedded Systems. The full Project life cycle services include Product design, development, testing and QA and Embedded engineering services. **In recent years, Pragmatic has stepped into Distributions and Sales of Educational Boards and Components.**

Mission

- To accelerate the development of products and reduce time to market through its proven processes, methodologies and tools.
- Providing turnkey Engineering solutions to the customers in the field of Electronics.

Vision

With the mantra of inspiring world and empowering minds, we aim to be a key Innovative Product designer and developer with Zero Tolerance.

Products & Services

RESE-BI (Roughness Evaluating Survey Equipment – Bump Integrator)

The RESE Bump Integrator (BI) is used for measuring road roughness and is a response-type roughness meter. The instrument measures the relative displacement of a vehicle's suspension in relation to the body of the vehicle. The concept behind Bump Integrator technology has long been established and proven worldwide. The BI readings are used to analyse the linear profile and calculate the 'roughness' of a road's surface.



Automotive Instrument Cluster Test Simulator

To address the product testing requirements we have developed test simulator for Instrument clusters. Combining the mechanical and electrical expertise customized clusters test simulators has been designed. This incorporates embedded systems and equipment with custom application software, fixtures and enclosures to construct the complete test system.



Automotive Load Box

Customized load boxes are designed to match the specific ECU. The provided load boxes with a display and sensor interfaces are installed in various automotive sectors for the calculation of load. Circuit wire harnessing is done as per specification.





ASSET TRACKING

Asset tracking tracks the asset (components) purchased for the each project and allows the user to track/verify the asset with the help of Barcode.

Application provides various reports for tracking the asset such as Asset IN, Asset OUT, Asset List and New Asset with various filter option like User wise, Date wise, Vendor, Product and Part wise report.

Application also contains features User Management, where the access to the application is limit according to the credentials provided by the Administrator.

Database : SQL Server 2008
IDE : Visual Studio 2008 (Framework 3.5)
Reporting : Crystal Report 2008
Language : VB.Net

PROJECT TRACKING

This application is used to create a project and set the description for the each steps involved in the process of making the product such as PCD assembly, connecting components, assembling the cases etc. and generate barcode for the product. After start/completion of each stage the product will be scanned at the stage will be update in the application. The user can also mark the product as Repair and stop the further process and user is also allowed to skip the steps with the peer's approval.

Application provides various kind of report to each the project status and the employee involved in the product development.

Application also contains features User Management, where the access to the application is limit according to the credentials provided by the Administrator.

Database : SQL Server 2008
IDE : Visual Studio 2008 (Framework 3.5)
Reporting : Crystal Report 2008
Language : VB.Net



PDF TO BARCODE LABEL CONVERTER

The importers from various companies provide the order list and the label for their order in the PDF format and SAPL employee manually copies & pastes the text from the PDF file and convert them to Labels. This application “PDF Converter” converts the PDF in to text and automatically converts them to Barcode labels. Application supports various PDF formats which is available in SAPL.

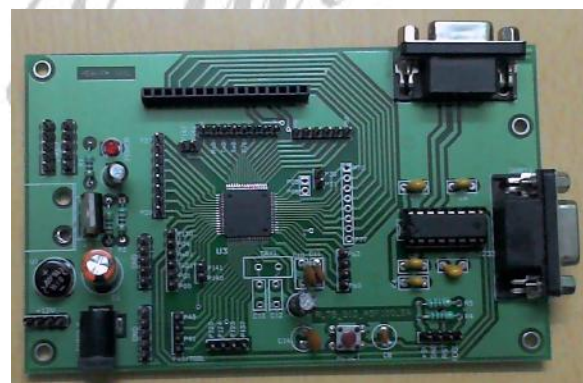
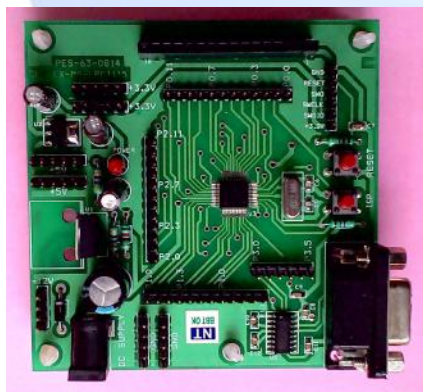
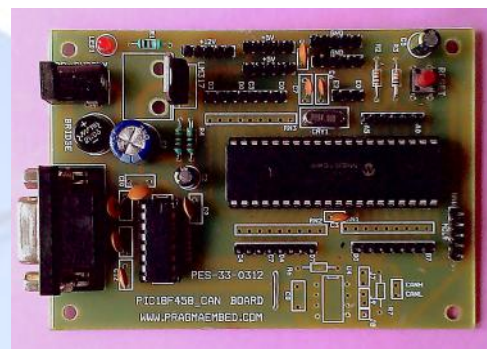
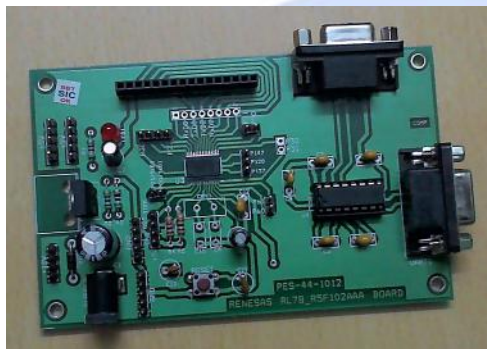
IDE : Visual Studio 2008 (Framework 3.5)

Language : VB.Net



Development Boards and PCB

- Renesas RL78 R5F100LEAFB, 16-bit, 64pin IC Development Board
- Renesas RL78 R5F102AAA, 16-bit, 30pin IC Development Board
- Microchip DSPIC33FJ256GP710, 16-bit, 100pin IC Development Board
- NXP ARM Cortex M0 LPC1115FBD48 48pin IC Development Board
- Microchip PIC18F458, PIC16F877A, 16-bit, 40pin IC Development Board





PRAGMATIC EMBD SOLUTIONS

Inspiring World, Empowering Mind

Technical Skills:

- Expertise in
 - Renesas – RL78 Series – R5F100LEA, R5F102AAA
 - Silicon Labs – C8051F020, C8051F350.
 - Microchip – DISPIC33F, PIC16F877A, PIC18F458
 - Raspberry PI 3 with Python Scripting.
 - NXP ARM 7– LPC2129, LPC2148, LPC2103
 - NXP ARM Cortex M0 – LPC1115FBD48
 - Arduino UNO & Mega.
- CAN Protocol handling using DISPIC33F, PIC18F458.
- Android Applications Development
- Dotnet Applications Development
- 2 layer PCB design using Orcad Layout Software.

Key customers:

Continental, Bangalore

Bangalore University (Highway Department)

Madhucon, Trichy

KNR Construction pvt Ltd, Bangalore

Sri Sai Surveryor, Bhopal.

Zreyah Semiconductor Systems Private Limited.

Sonal Apparel Private Limited (SAPL)

Hencon Associates

ESYA Engineering Pvt Ltd

Apart from these we have catered to the automation needs of many small scale industries.

For further queries please feel free to contact us.